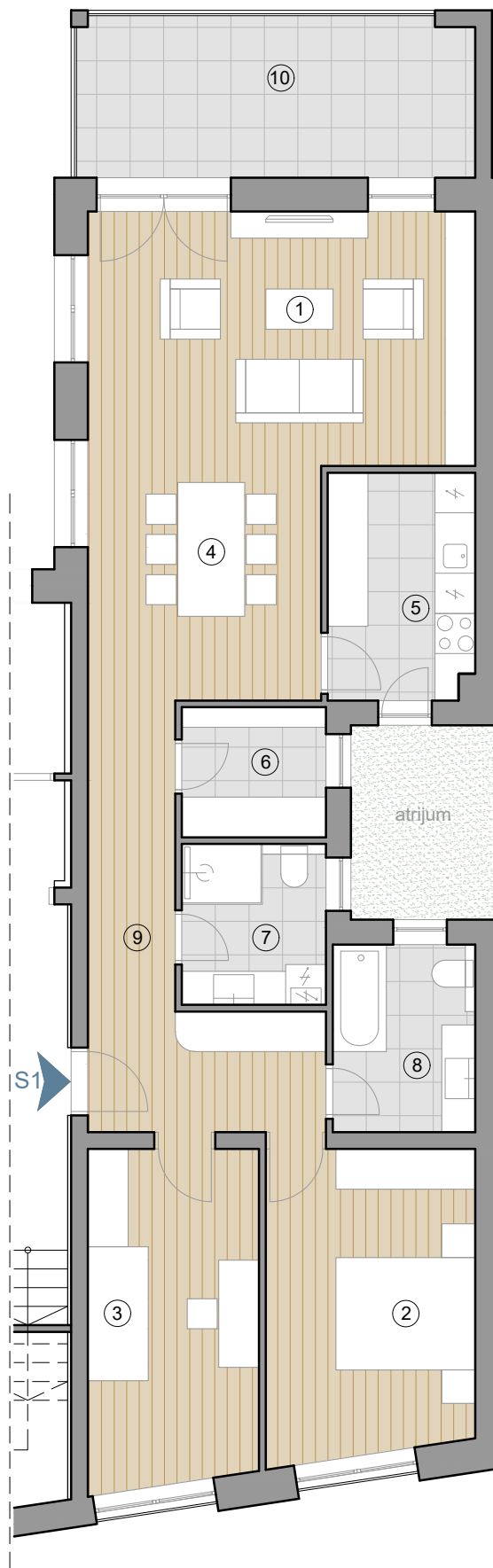
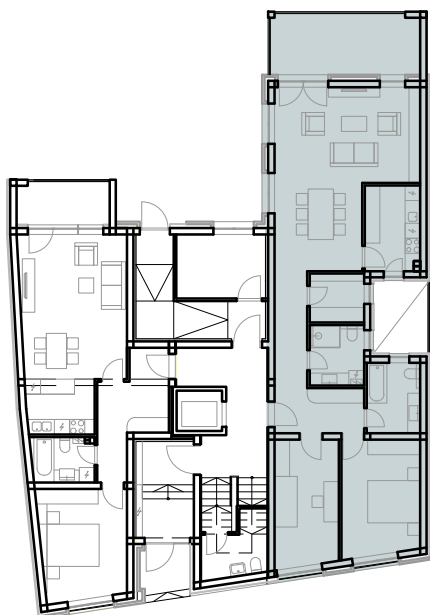


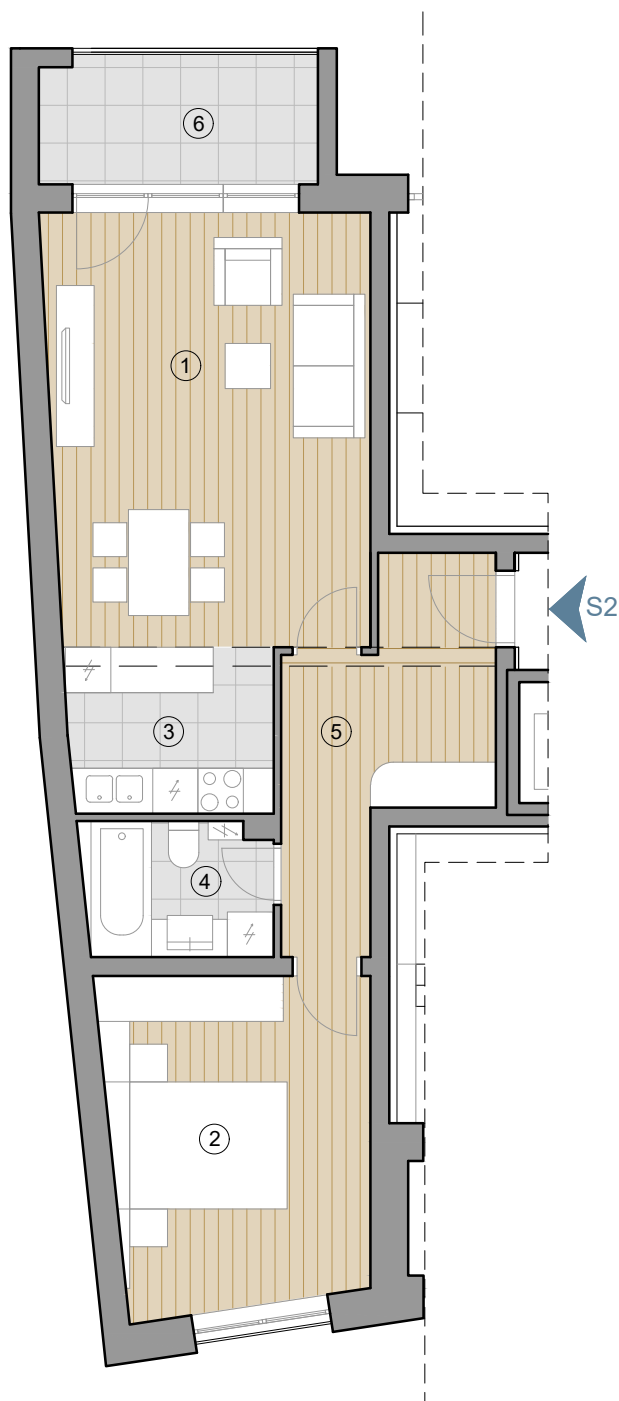
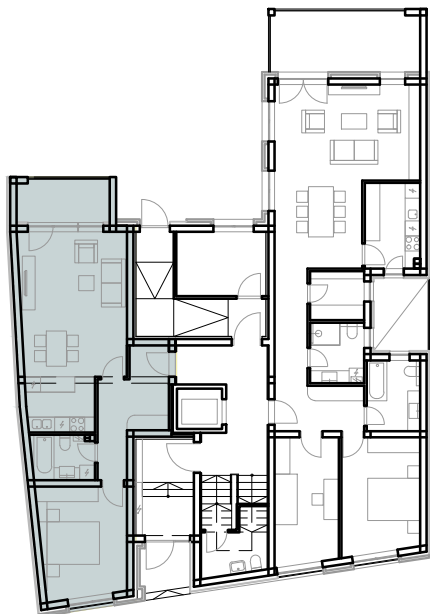


STAN S1 · PRIZEMLJE, TROSOBAN



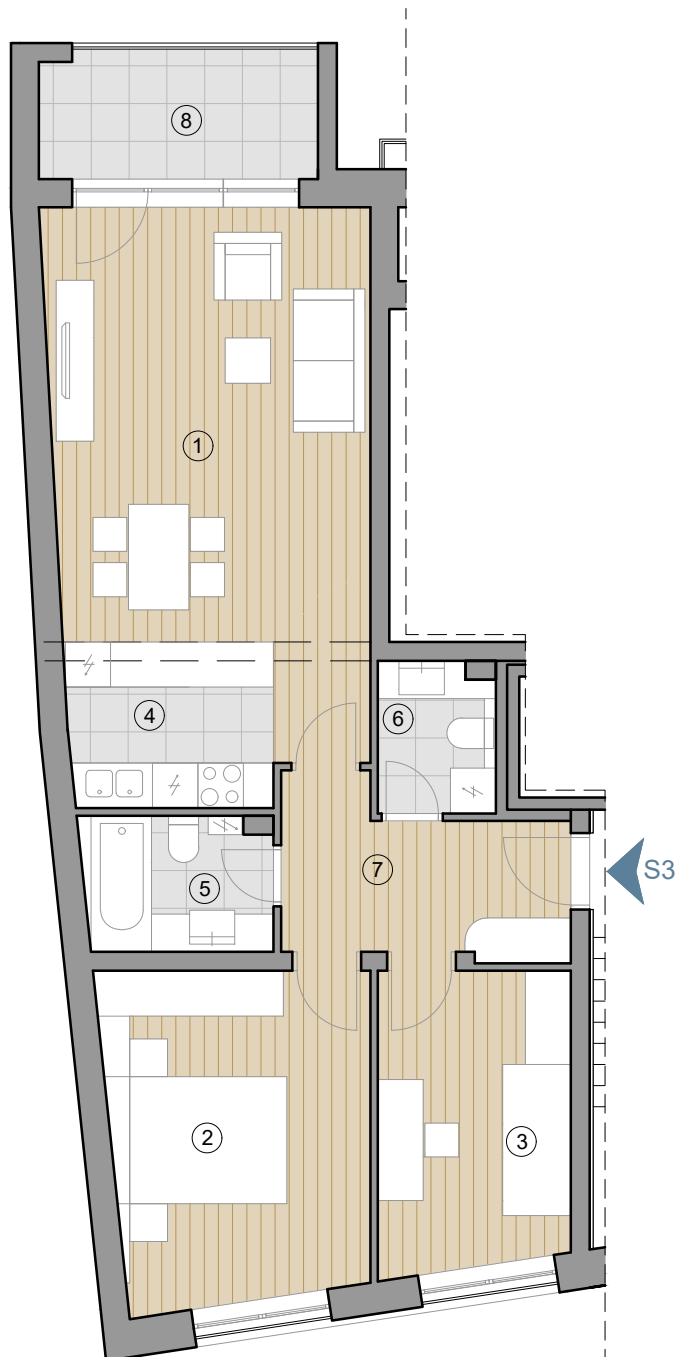
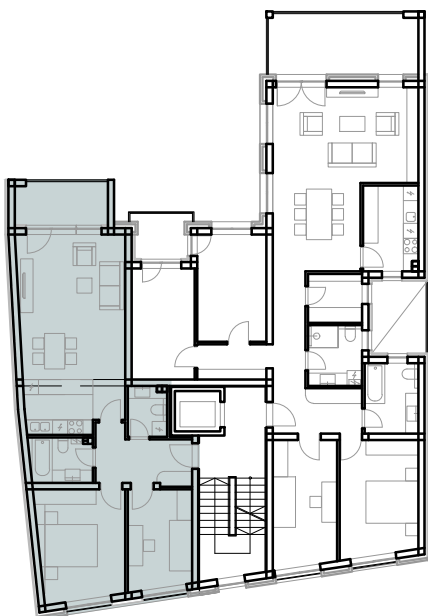
BR.	NAMENA PROSTORIJA	POVRŠINA (m <sup>2</sup> )
<b>PRIZEMLJE - STAN S1</b>		
1	DNEVNI BORAVAK	21.95
2	SOBA 1	14.23
3	SOBA 2	12.75
4	TRPEZARIJA	12.16
5	KUHINJA	7.48
6	OSTAVA	4.17
7	KUPATILO 1	5.16
8	KUPATILO 2	5.95
9	PREDSOBLJE	12.42
<b>STAN 1</b>		<b>96.27</b>
<b>REDUKOVANA POVRŠINA (3%)</b>		<b>93.38</b>
10	TERASA	14.91
<b>UKUPNO STAN 1</b>		<b>108.29</b>

STAN S2 · PRIZEMLJE, DVOSOBAN



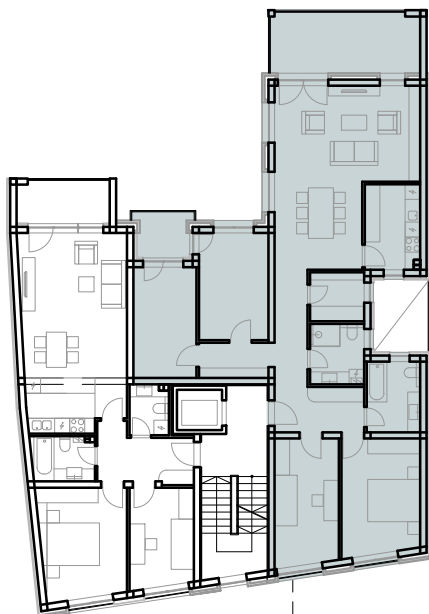
BR.	NAMENA PROSTORIJA	POVRŠINA (m <sup>2</sup> )
<b>PRIZEMLJE - STAN S2</b>		
1	DNEVNI BORAVAK SA TRPEZARIJOM	24.30
2	SOBA	15.02
3	KUHINJA	5.94
4	KUPATILO	4.52
5	PREDSOBLJE	10.18
<b>STAN 2</b>		<b>59.96</b>
<b>REDUKOVANA POVRŠINA (3%)</b>		<b>58.16</b>
6	TERASA	6.53
<b>UKUPNO STAN 2</b>		<b>64.69</b>

STAN S3 · I SPRAT, TROSOBAN



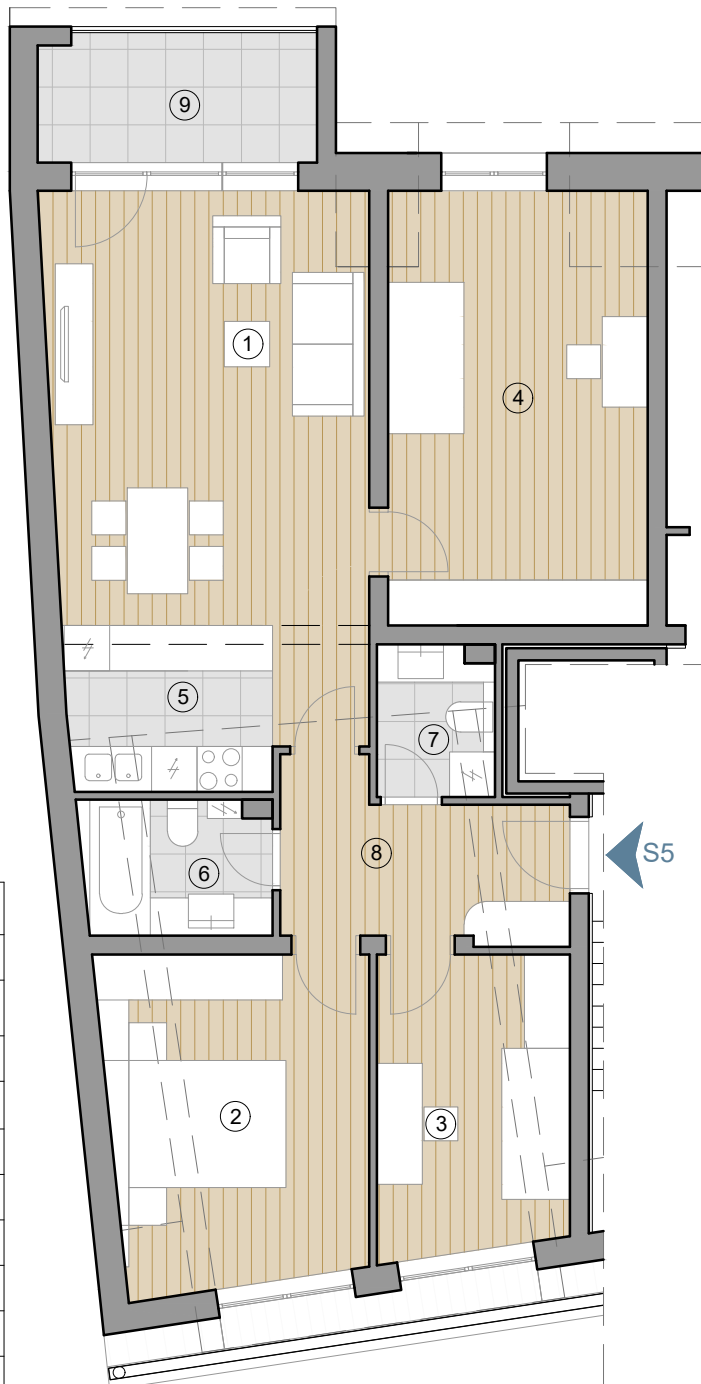
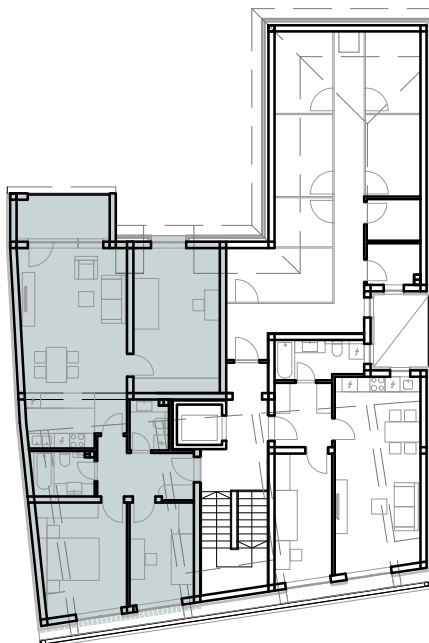
BR.	NAMENA PROSTORIJA	POVRŠINA (m <sup>2</sup> )
<b>I SPRAT - STAN 3</b>		
1	DNEVNI BORAVAK SA TRPEZARIJOM	24.30
2	SOBA 1	15.02
3	SOBA 2	10.00
4	KUHINJA	8.00
5	KUPATILO	4.52
6	WC	3.15
7	PREDSOBLJE	7.42
<b>STAN 3</b>		<b>72.41</b>
<b>REDUKOVANA POVRŠINA (3%)</b>		<b>70.24</b>
8	TERASA	6.54
<b>UKUPNO STAN 3</b>		<b>76.78</b>

STAN S4 · I SPRAT, PETOSOBAN



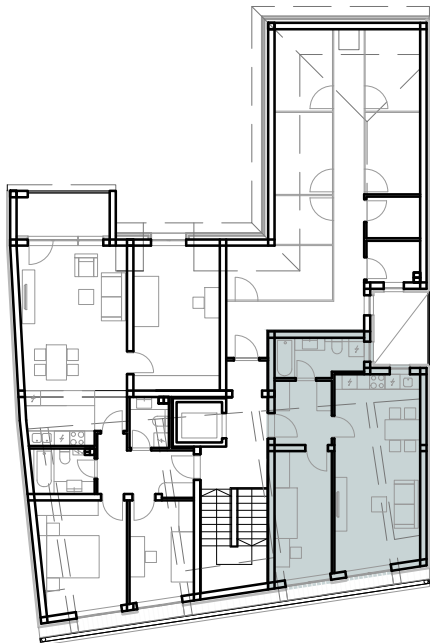
BR.	NAMENA PROSTORIJA	POVRŠINA (m <sup>2</sup> )
<b>I SPRAT - STAN 4</b>		
1	DNEVNI BORAVAK	21.95
2	SOBA 1	14.23
3	SOBA 2	12.75
4	SOBA 3	11.00
5	SOBA 4	11.70
6	TRPEZARIJA	12.17
7	KUHINJA	7.48
8	OSTAVA	4.17
9	KUPATILO 1	5.16
10	KUPATILO 2	5.95
11	PREDSOBLJE	12.42
12	HODNIK	3.85
<b>STAN 4</b>		<b>122.83</b>
<b>REDUKOVANA POVRŠINA (3%)</b>		<b>119.15</b>
13	TERASA 1	14.91
14	TERASA 2	4.03
<b>UKUPNO STAN 4</b>		<b>138.09</b>

STAN S5 · POTKROVLJE, ČETVOROSOBAN

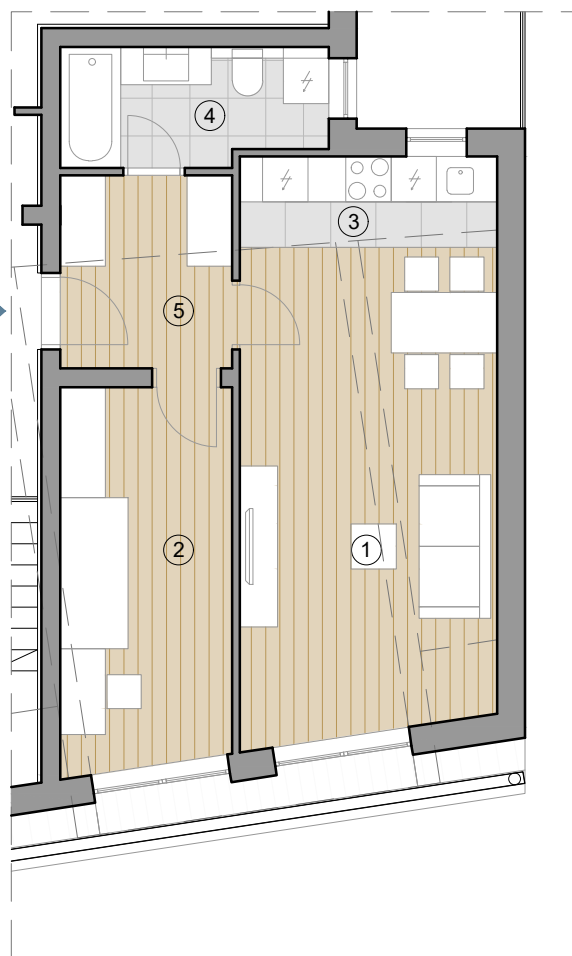


BR.	NAMENA PROSTORIJA	POVRŠINA (m <sup>2</sup> )
<b>POTKROVLJE - STAN 5</b>		
1	DNEVNI BORAVAK SA TRPEZARIJOM	24.14
2	SOBA 1	13.85
3	SOBA 2	9.06
4	SOBA 3	19.21
5	KUHINJA	8.00
6	KUPATILO 1	4.52
7	KUPATILO 2	3.15
8	PREDSOBLJE	7.61
<b>STAN 5</b>		<b>89.54</b>
<b>REDUKOVANA POVRŠINA (3%)</b>		<b>86.85</b>
9	TERASA	6.54
<b>UKUPNO STAN 5</b>		<b>93.39</b>

STAN S6 · POTKROVLJE, DVOSOBAN



S6



BR.	NAMENA PROSTORIJA	POVRŠINA (m <sup>2</sup> )
<b>POTKROVLJE - STAN 6</b>		
1	DNEVNI BORAVAK SA TRPEZARIJOM	20.60
2	SOBA 1	10.60
3	KUHINJA	4.08
4	KUPATILO	5.36
5	PREDSOBLJE	5.80
<b>STAN 6</b>		<b>46.44</b>
<b>REDUKOVANA POVRŠINA (3%)</b>		<b>45.05</b>
<b>UKUPNO STAN 6</b>		<b>45.05</b>